



Hotel Overview

LE CANNES A RECALL LUXE HOTEL features a total of 40 appointed guestrooms and suites, categorized as follows:

- Standard Twin Beds (9 Rooms)
- Standard Double Bed (10 Rooms)
- Superior Twin Beds (8 Rooms)
- Superior Double Bed (8 Rooms)
- Deluxe Double Bed (4 Rooms)
- Suite (1 Rooms)

Room Categories (6 Room Types)

1. Standard Twin Beds

The hotel offers a total of 9 Standard Twin Beds Rooms.

Room Features :

27 sqm • Non-smoking • Separate Rain Shower • Air Conditioning • Elevator Access • Bath Amenities • Mini Refrigerator • Coffee Making Facilities • Minibar • Electric Kettle • Telephone • Hairdryer • Flat-screen TV • In-room Safety Box • Free Wi-Fi • Curtains • Luggage rack • Picnic fan • Lamp • Water heater • Hangers • Wardrobe • All Rooms Pool Views

Room Allocate

- 2nd Floor : 209, 210, 211, 212, 214 (5 Rooms)
- 3rd Floor : 309, 310, 311, 312 (4 Rooms)

2. Standard Double Bed

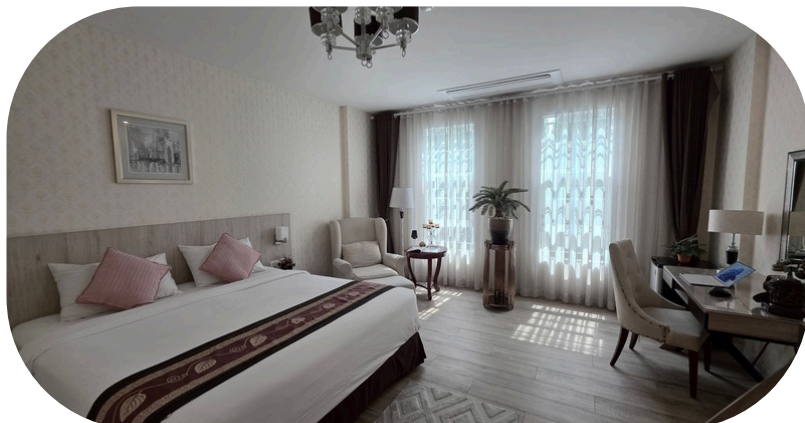
The hotel offers a total of 10 Standard Double Bed Rooms.

Room Features

27 sqm • Non-smoking • Separate Rain Shower • Air Conditioning • Elevator Access • Bath Amenities • Mini Refrigerator • Coffee Making Facilities • Minibar • Electric Kettle • Telephone • Hairdryer • Flat-screen TV • In-room Safety Box • Free Wi-Fi • Curtains • Luggage rack • Lamp • Water heater • Hangers • Wardrobe • All Rooms Road Views

Room Allocate

- 2nd Floor : 215, 216, 217, 218, 219 (5 Rooms)
- 3rd Floor : 315, 316, 317, 318, 319 (5 Rooms)





3. Superior Twin Beds

The hotel offers a total of 8 Superior Twin Beds Rooms.

Room Features

37 sqm • Non-smoking • Separate Rain Shower • Bathtub • Air Conditioning • Elevator Access • Bath Amenities • Mini Refrigerator • Coffee Making Facilities • Minibar • Electric Kettle • Telephone • Hairdryer • Flat-screen TV • In-room Safety Box • Free Wi-Fi • Curtains • Luggage rack • Lamp • Water heater • Hangers • Wardrobe • Ironing board/Iron • All Rooms Parking Views

Room Allocate

- 2nd Floor : 205, 206, 207, 208 (4 Rooms)
- 3rd Floor : 305, 306, 307, 308 (4 Rooms)

4. Superior Double Bed

The hotel offers a total of 8 Superior Double Bed Rooms.

Room Features

37 sqm • Non-smoking • Separate Rain Shower • Bathtub • Air Conditioning • Elevator Access • Bath Amenities • Mini Refrigerator • Coffee Making Facilities • Minibar • Electric Kettle • Telephone • Hairdryer • Flat-screen TV • In-room Safety Box • Free Wi-Fi • Curtains • Luggage rack • Lamp • Water heater • Hangers • Wardrobe • Ironing board/Iron • 2nd No Views • 3rd City Views

Room Allocate

- 2nd Floor : 201, 202, 203, 204 (4 Rooms are No Views)
- 3rd Floor : 301, 302, 303, 304 (4 Rooms are City Views)

5. Deluxe Double Bed

The hotel offers a total of 4 Deluxe Double Bed Rooms.

Room Features

40 sqm • Non-smoking • Separate Rain Shower • Bathtub • Air Conditioning • Elevator Access • Bath Amenities • Mini Refrigerator • Coffee Making Facilities • Minibar • Electric Kettle • Telephone • Hairdryer • Flat-screen TV • In-room Safety Box • Free Wi-Fi • Curtains • Luggage rack • Lamp • Water heater • Hangers • Wardrobe • Ironing board/Iron • All Rooms NO Views

Room Allocate

- 1st Floor : 101, 102, 103, 104 (4 Rooms)

6. Suite

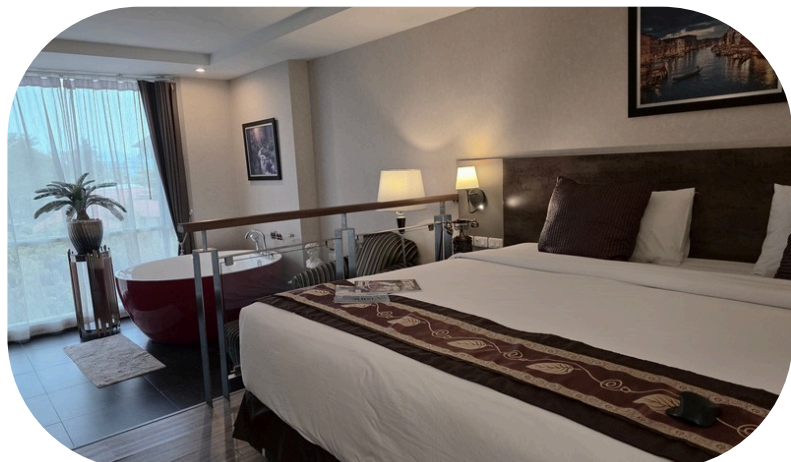
The hotel offers a total of 1 Suite Room.

Room Features

45 sqm • Non-smoking • Separate Rain Shower • Bathtub • Air Conditioning • Elevator Access • Bath Amenities • Mini Refrigerator • Coffee Making Facilities • Minibar • Electric Kettle • Telephone • Hairdryer • Flat-screen TV • In-room Safety Box • Free Wi-Fi • Curtains • Luggage rack • Lamp • Water heater • Hangers • Wardrobe • Ironing board/Iron • Pool Views

Room Allocate

- 3rd Floor : 314 (1 Rooms)



Café & Restaurant

- Breakfast Times: 7:00AM – 10:00AM
- Breakfast Price : In-House 180THB/Person,

Seating Capacity

- Indoor Seating Area : 12 Tables and 34 Chairs
- Outdoor Seating Area : 8 Tables and 16 Chairs



Other Services

Front Office Operation : 24 Hours

Other Facilities:

- Swimming Pool Operation time : 7:00AM – 8:00PM
- Swimming Pool Size : Width 5m x Length 10m x Depth 1.4m
- Bicycle Service : 2 bicycles available for our guest
- Elevator Service : 24 Hours daily
- CCTV : 24 Hours daily in the hotel area

MORE:

- Parking lots : 25 lots for Car / 10 lots for motorcycle
- Free Internet WiFi

Top 5 Nearby Tourist Attractions & Transportation Options

- Chiang Mai International Airport
10min From Hotel to Chiang Mai International Airport by car
- Tha Pae Gate(Sunday Night Market)
10min From Hotel to Tha Pae Gate(Sunday Night Market) by car
- Night Baazar (Night Market)
8min From Hotel to Night Baazar (Night Market) by car
- Wua Lai road (Saturday Night Market)
8min From Hotel to Wua Lai road (Saturday Night Market) by car
- One Nimman or Maya
20min From Hotel to One Nimman or Maya by car



Company & Bank Information

Company Name:

- Oregon Company Limited

Bank Information:

- Bank: Kasikorn Bank
- Bank Account : 229-1-90825-2

Tax ID :

- 050-555-800-8194

Hotel Map:

➤ Le Cannes, a Recall Luxe Hotel



Hotel Address:

➤ 24/7 Pa Daed Subdistrict, Mueang District, Chiang Mai 50100

Contact Details:

- Tel. 0952349695
- LINE ID : lecanneshotel
- Email : lecannes.hotel@gmail.com , fo-lecannes@recallhotels.com

GPS:

➤ <https://maps.app.goo.gl/kot72GWnfLUSCBpb7>

Latitude / Longitude:

- Latitude: 18.762518126954028
- Longitude: 99.00072506783206